

**Hollow Shaft Incremental Encoder with Pulse Output**



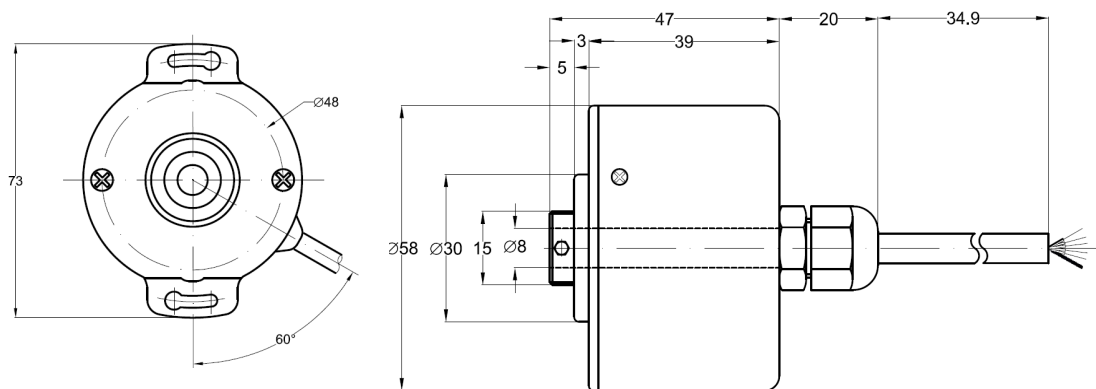
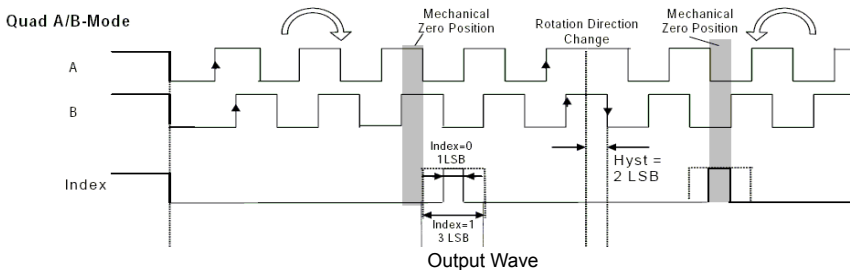
- Ø 50, 58 mm
- Optical rotary
- Incremental 100-200-360-400-500-720-1000-1024-1800  
2000-2048-2500-3600-4000-4096-5000 pulse / turn

**Main Applications**

Position/ Angle Measurement Applications for Automation Systems

**Specifications**

Case Diameter	Ø 50 or Ø 58 mm
Rod Diameter	Ø 6-8-10 mm
Case Material	Aluminium and steel
Rod Material	Stainless Steel
Measurement Type	Optical
Output Type	TP (push-pull), TTL, LD or HLD
Supply Voltage	5V, 8-24V, or 5-30V DC
Maximum Speed	4000 rpm
Working Temperature	-20.....+80 °C
Electrical Connection	2.5 m Cable (Standard)



**Ordering Procedure**

PRI	58H	TP	360	Z	V2	2.5 m
Model	Case Diameter	Output Type TP = Totempole TT = TTL LD= Line Driver HLD= High Line Driver	Resolution 100-200-360-400-500 720-1000-1024-1800 2000-2048-2500-3600 4000-4096-5000 pulse/turn	Output Signal B:AB Z: A, B, Z or ZZ : AA',BB',ZZ'	Supply Voltage V1: 5V V2: 8-24V or V3: 5-30V	Cable lenght 2.5 metre (Standard)