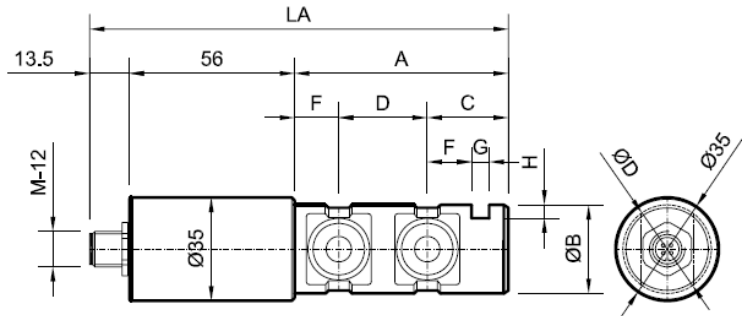
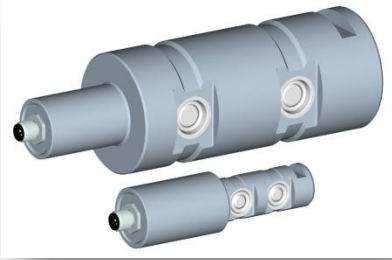


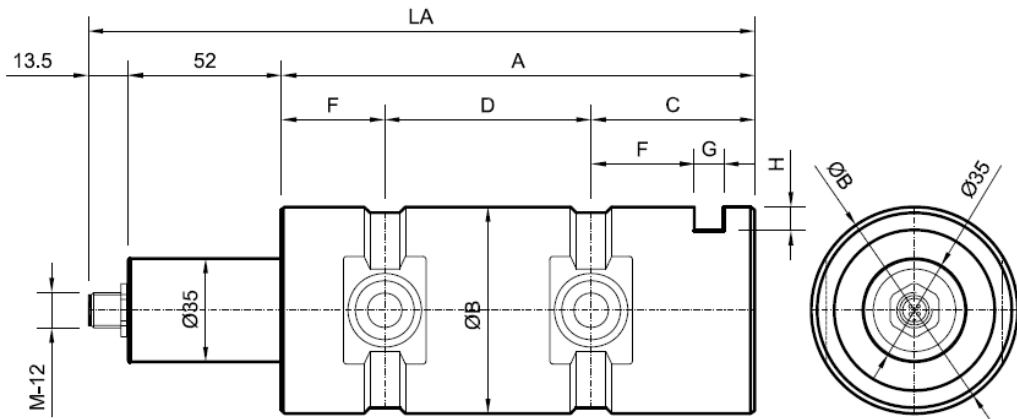
Load pin Mod: STA2



Models for up to 30 kN

Description: Load pin for OEM applications.

- Manufactured in stainless steel.
- Strain gages technology.
- Integrated amplifier.
- Easy to install.
- Static or dynamic measurements.
- Vibration resistance.
- Good repeatability.
- High long term stability.
- *Applications* in industrial weighing, manufacturing process automation, and deviation pulleys as a shear pin.

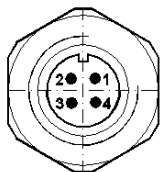


Models for more than to 50 kN

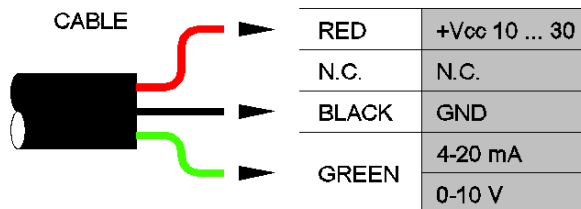
Duty Load (kN)	ØB	LA	A	C	D	E	H	G
5	20	120	50.5	50.5	20	10	4	5
10	25	130	60.5	60.5	25	12.5	4.5	5
20	30	142	72.5	72.5	30	15	5.5	6
30	35	149,5	82.5	82.5	35	17,5	6	6
50	40	163	97,5	97,5	40	22,5	6,5	6
100	50	178	112,5	112,5	50	23	7	8
200	70	226	160,5	160,5	70	35	10	10

Electrical connection for standard cable

CONECTOR
M-12



1	+V _{cc} 10 ... 30
2	N.C.
3	GND
4	4-20 mA 0-10 V



TECHNICAL CHARACTERISTICS

Accuracy	<0,5 %	Insulation resistance (V.Test=100V)	4 GΩ / 100 V
Hysteresis	<0,2% F.S.	Maximum work load	150% F.S.
Creep in 30 minutes	<0.1% F.S.	Breaking load	>300% F.S.
Temp. Effect on Sensibility	0.2% / 10°C	Load limit without loss of characteristics	200% F.S.
Temp. Effect on zero	0.2% / 10°C	Protection	IP 67
Working Range of Temperature	-40°C...70°C	Electrical protection	Reverse voltage and short circuit
Maximum deformation	<0.1 mm F.S.	Cross Sensitivity	<5%
Electrical connector	Circular connector M12, 4 pin	Manufacturing material	Stainless steel (17-4 PH)
Analogue output			
Output signal	4...20 mA; 3 wires 0...10VDC; 3 wires	Current consumption	<15mA
Required Power Supply	12-30 VDC		
CAN-open: please consult our Commercial Department for any further information.			