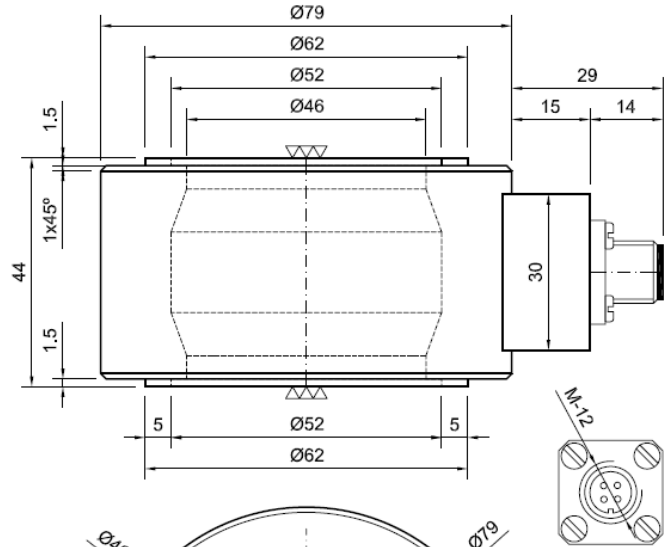
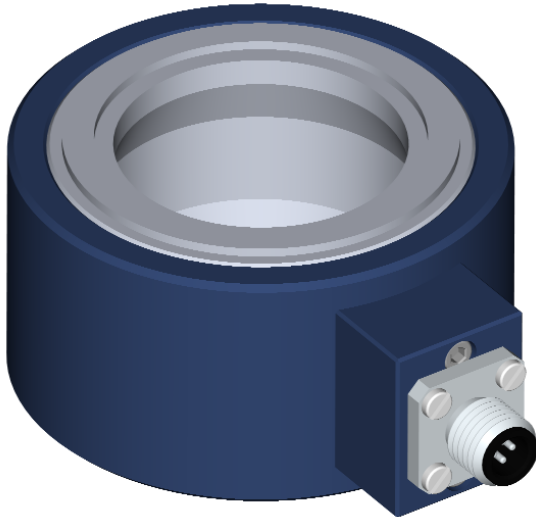


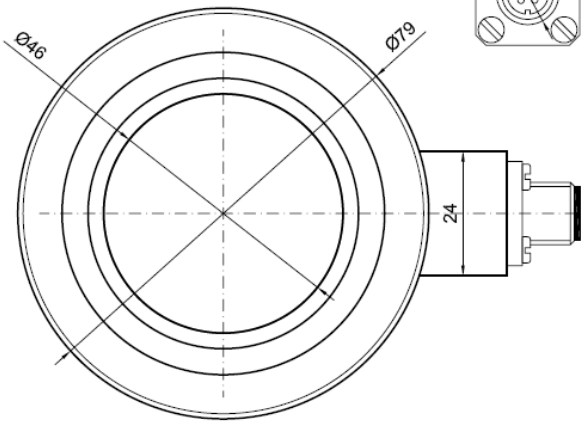
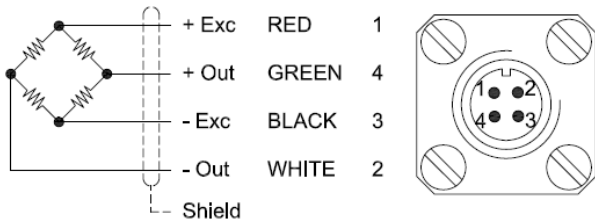
**RLC 200 KN Ø46-79**



Load cells specially designed for working on compression  
Manufactured in stainless steel

**WIRING SCHEMATIC DIAGRAM  
(Balanced bridge configuration)**

**4 WIRES (Standard) CONNECTIONS**



Dimensions kg.

**Technical characteristics**

Accuracy	0.5 %	Input impedance	700Ω ±20 Ω
Nominal load (N.L.)	200 KN	Output impedance	700Ω ±3 Ω
Tension of excitement	≤12V	Insulation resistance	>2000 10 <sup>6</sup> Ω
Combined error	<0.5 % F.S.	Maximum working load	150% F.S.
Hysteresis	<0.3 % F.S.	Break load	>300% F.S.
Creep in 30 min.	<0.049 % F.S.	Maximum elastic deformation	<0.1 mm.
Temperature range compensated	-10°...+40°C	Protection	IP 65