

# SI9500 Instrument

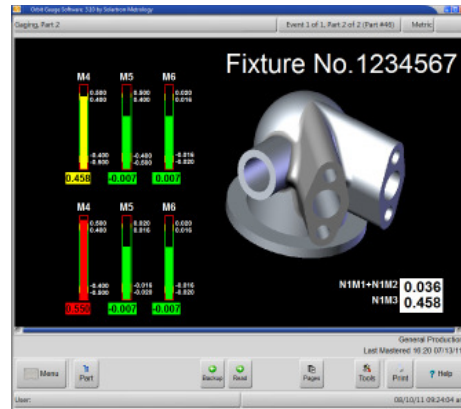
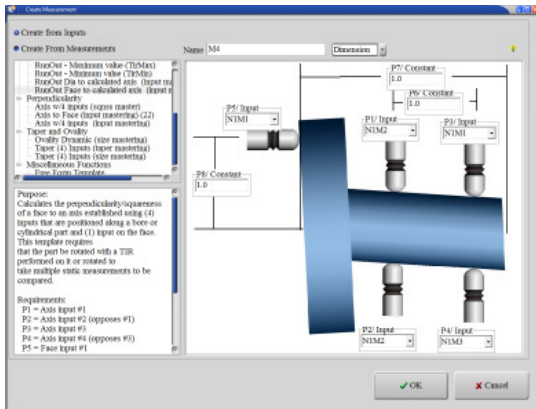


- ▶ Flexible Measurement Computer
- ▶ Orbit Network Interface via USBIM
- ▶ Easy setup with predefined measurements
- ▶ Configurable Screen
- ▶ Front Panel IP 55
- ▶ Robust, industrial metal case
- ▶ 17" Touch Screen

Solartron Metrology is the world leader in bringing innovation and quality products to the gauging market. The SI9500 is Solartron's latest addition to its range of instruments to allow for more complex applications. The Instruments features flexible programming of measurement tasks while being easy to use at the same time. The software used has been evolved from a long history of many diverse gauging solutions. The SI9500 features a 17" touch screen with its software having a on screen keyboard, eliminating the need for an external keyboard and mouse. The case is entirely made from strong metal for robustness and comes with a heavy stand.

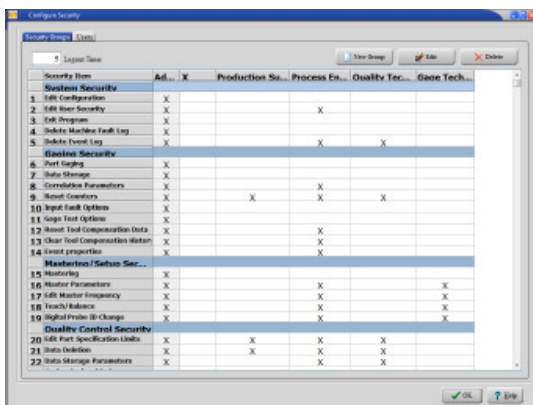
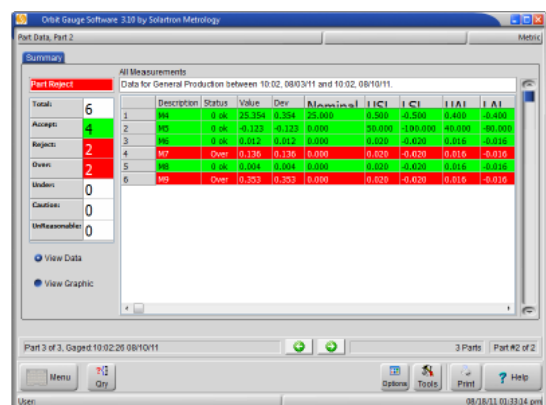
Variable static and dynamic data is displayed with colour coded bar graphs, digital displays, and part images. Graphic or photographed images are imported and automatically sized to full monitor dimensions. Variable data easily switches between metric and English and from actual to deviation from zero. All display areas such as background, text, and screen buttons are colour configurable.

## Features



Fully flexible screen configuration simplifies User interaction. Ability to create step by step instructions minimize operator errors.

Easy configuration through a true graphic user interface even for complex applications. Pre-configured measurements simplify setup and shorten development time.

Part	Description	Status	Value	Dev	Min/Max	I	CI	I	AI	I
1	M4	OK	25.354	0.004	25.000	0.000	-0.500	0.400	0.400	0.400
2	M5	OK	-0.123	-0.123	0.000	0.000	-1.000	-0.000	-0.000	-0.000
3	M6	OK	0.000	0.000	0.000	0.000	0.000	0.000	0.000	0.000
4	M3	Over	0.350	0.350	0.000	0.000	-0.020	-0.020	-0.016	-0.016
5	M2	Over	0.304	0.304	0.000	0.000	-0.020	-0.020	-0.016	-0.016
6	M3	Over	0.303	0.303	0.000	0.000	-0.020	-0.020	-0.016	-0.016

Security features allow the restriction of specific functions for different user groups to prevent unauthorised altering of settings. User login can be forced with automatic logoff timer.

All parts data is stored within the SI9500 and can be inspected inside the software. Text export is available for integration into SPC packages.

For 3D drawings please contact [sales.solartronmetrology@ametek.com](mailto:sales.solartronmetrology@ametek.com)

## Technical Specification

Display	SI9500
Screen size	43 cm / 17 "
Analogue	1280 x 1024
Dimensions (Display only)	34.5 x 41 x 6.5 cm
Orbit Network	
Supported Orbit Modules	All sensors with Orbit output, AIM, EIM, DIM, DIOM
Supported Orbit Controller	USBIM, RS232IM, ETHIM
Number of Orbit Modules per network	31
Multiple Networks	Yes
Digital Probe Resolutions	14, 16 and 18 Bits
EIM Quadrature	1, 2 and 4
Connectivity	
USB	4 x USB 2.0 Ports
Mini-PCI Socket	1
Serial Ports	4 x RJ45 with DB9 Adapters
Keyboard	1 x PS/2
Parallel Port	1
LAN	1 x 1000 Mbit/s
Audio In/Out	1/1

Measurement functions	
Multi Step Applications	Yes
Pre-defined Measurements	Yes
User configured Measurements	Yes
Tolerances	Yes
Mastering	Min/Max/Mean
User configurable Screen	Yes, each measurement step with own screen
SPC calculations	simple Measurement distribution screen
Text Export	Yes
User administration/ security	Yes
Environmental	
Operating Temperature	5 to +40 °C
Storage Temperature	-20 to +55 °C
Operating Humidity	20 % to 80 % RH non condensing
Storage Humidity	20 % to 85 % RH non condensing
IP Rating Front Panel	IP55
IP Rating whole unit	IP43
MTBF	5.000 h

### United Kingdom - Head Office

Solartron Metrology  
Steyning Way  
Bognor Regis  
West Sussex  
PO22 9ST  
Tel: +44 (0) 1243 833333  
Fax: +44 (0) 1243 833322  
Sales.solartronmetrology@ametek.com

### India

Ametek Instruments India Private Limited  
1st Floor, Left Wing  
Prestige Featherlite Tech Park  
Plot #148, EPIP II Phase  
Whitefield, Bengaluru 560 066  
Karnataka, India  
Tel: +91 80 6782 3200  
Fax: +91 80 6782 3232

### France

Solartron Metrology  
Rond-point de l'Espine des Champs  
Buroplus - Bat. D  
Elancourt 78990  
Tel: +33 (0)1 30 68 89 50  
Fax: +33 (0)1 30 68 89 59  
france.solartronmetrology@ametek.com

### USA

Solartron Metrology  
USA Central Sales Office  
915 N. New Hope Road, Suite C  
Gastonia, NC 28054  
Tel: +1 800 873 5838  
Fax: +1 704 868 8466  
usasales.solartronmetrology@ametek.com

### Germany

Ametek GmbH  
Solartron Metrology Division  
Rudolf-Diesel-Strasse 16  
40670 Meerbusch  
Tel: +49 (0) 2159 9136 500  
Fax: +49 (0) 2159 9136 505  
vertrieb.solartron@ametek.de

### China

AMETEK Commercial Enterprise  
(Shanghai) Co. Ltd  
No. 1 AMETEK Road  
Ju Ting Economic Development Zone  
Shanghai 201615  
Tel: +86 21 5763 2509  
Fax: +86 21 5866 0969 Ext. 261/262  
china.solartronmetrology@ametek.com



### Offices worldwide

Agent and distributor details available at  
[www.solartronmetrology.com](http://www.solartronmetrology.com)



Q 09540

Solartron pursues a policy of continuous development. Specifications in this document may therefore be changed without notice.

Trademarks as appropriate