

Form No: 502674 ORDERING GUIDE - DC S-SERIES

V

Measurement Range (mm)

Note!

for +/- volts, quote +/- mm
for 0-5 V or 10 V, quote total travel

IP Rating

5	65
7	67

Core/Carrier Type

M	Free 6.3 mm core - M4 x 0.7 thread
S	Guided core/carrier - M6 x 1.0 thread
T	Free core + carrier
U	Guided core/carrier with 6 mm Universal Joints * **

* Not for use with V100 & V150 bipolar and V200 & V300 unipolar without Solartron approval
** Not available with Axial Connector

Output Range

A	-5 to + 5 VDC
B	0 to +10 VDC
C	+5 to -5 VDC
D	+10 to 0 VDC
E	+10 to -10 VDC
F	-10 to +10 VDC
G	0 to +5 VDC
H	+5 to 0 VDC

Electrical Connections

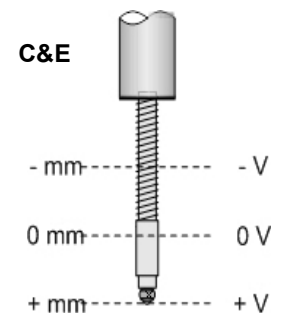
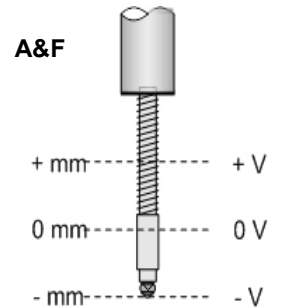
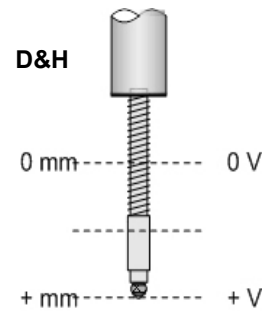
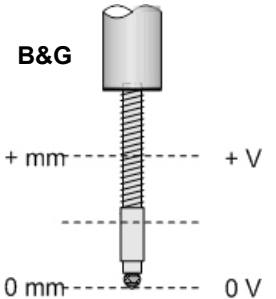
N	Cable only
D	Din Plug 5 way 180° screw lock
L	Axial connector with mating half *

* Not available with Universal Joints

Cable Length

X	X = cable length in metres *
0	If no cable required with Axial connector

* No greater than 5 metres



See overleaf for Accessories, Springs and Ball Tips

Form No: 502675

ORDERING GUIDE - 4-20mA S-SERIES

I									
---	--	--	--	--	--	--	--	--	--

Total Measurement Range

x	x	x
---	---	---

x = mm

IP Rating - - - - -

5
7

65
67

Core/Carrier Type - - - - -

M
S
T
U

6.3 mm core- M4 x 0.7 thread
Guided core/carrier - M6 x 1.0 thread
Free core + carrier
Guided core carrier with 6 mm
Universal Joints * **

* **Not for I200 & I300 without Solartron approval**
** **Not available with Axial Connector**

Output Range - - - - -

A
B

4-20 mA
20-4 mA

Electrical Connections - - - - -

N
D
L

Cable only
Din Plug 3 way 180° screw lock
Axial connector with mating half *

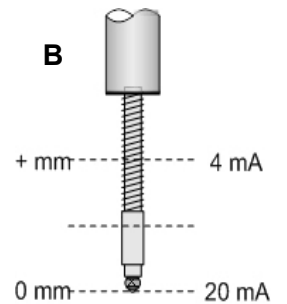
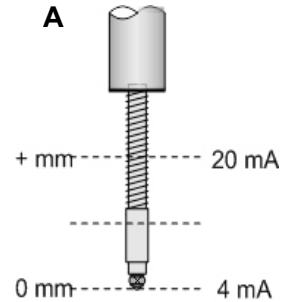
* **Not available with Universal Joints**

Cable Length - - - - -

X
0

X = cable length in metres *
If no cable required with Axial connector

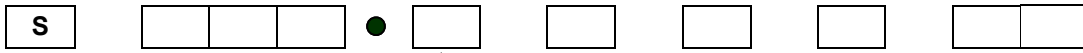
* **Solartron approval required for more than 10 metres**



See overleaf for Accessories, Springs and Ball Tips

Form No: **502676**

ORDERING GUIDE - LVDT S-SERIES



Measurement Range (+/- mm)

IP Rating

5	65
7	67

Core/Carrier Type

M	6.3 mm core - M4 x 0.7 thread
S	Guided core/carrier - M6 x 1.0 thread
T	Free core + carrier
U	Guided core/carrier with 6 mm Universal Joints * **

* **Not for S100 & S150 without Solartron approval**
 ** **Not available with Axial Connector**

Electrical Connections

N	Cable only
A	0 - 24 V BICM fitted **
B	15 V - 0 - 15 V BICM fitted **
D	Din Plug 5 way 240° screw lock
L	Axial connector with mating half *
F	15 V - 0 - 15 V BICM fitted ** + Din Plug 5 way 240° screw lock
G	0 - 24 V BICM fitted ** + Din Plug 5 way 240° screw lock
J	IP 67 BICM fitted ** (not 24 Volt)
K	IP 67 BICM fitted ** + Din Plug 5 way 240° screw lock (not 24 Volt)

* **Axial connector not available with Universal Joints**
 ** **BICM Output = ±10 V**

Cable Length in Metres

X	X	XX = cable length in metres (Solartron approval required for 5 metres and above)
Y	Z	With BICM

Y = cable length in metres between transducer and BICM (no greater than 5 metres)

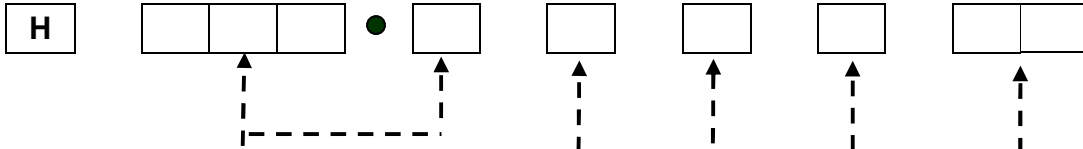
Z = cable length in metres after BICM (no greater than 9 metres)

0	0	If no cable required with Axial connector
---	---	---

See overleaf for Accessories, Springs and Ball Tips

Form No: **502874**

ORDERING GUIDE - LVDT S-SERIES (Hi Temp - 200 degrees C)



Measurement Range (+/- mm)

IP Rating

5	65
---	----

Core/Carrier Type

M	6.3 mm core - M4 x 0.7 thread
S	Guided core/carrier - M6 x 1.0 thread
T	Free core + carrier
U	Guided core/carrier with 6 mm Universal Joints * **

* **Not for H100 & H150 without Solartron approval**

** **Not available with Axial Connector**

Electrical Connections

N	Cable only
A	0 - 24 V BICM fitted **
B	15 V - 0 - 15 V BICM fitted **
D	Din Plug 5 way 240° screw lock
L	Axial connector with mating half *
F	15 V - 0 - 15 V BICM fitted ** + Din Plug 5 way 240° screw lock
G	0 - 24 V BICM fitted ** + Din Plug 5 way 240° screw lock
J	IP 67 BICM fitted ** (not 24 Volt)
K	IP 67 BICM fitted ** + Din Plug 5 way 240° screw lock (not 24 Volt)

* **Axial connector not available with U/J**

** **BICM Output = ±10 V**

Cable Length in Metres

X	X	XX = cable length in metres (Solartron approval required for 5 metres and above)
Y	Z	With BICM

Y= cable length in metres between transducer and BICM (no greater than 5 metres)

Z =cable length in metres after BICM (no greater than 9 metres)

0	0	If no cable required with Axial connector
---	---	---

See overleaf for Accessories, Springs and Ball Tips