

LM10 linear magnetic encoder system



The LM10 is a contactless high-speed linear magnetic encoder designed for use in harsh environments.

The LM10 features a compact sealed readhead that rides at up to 1.0 mm from the self-adhesive magnetic strip scale, which brings up to 100 m travel.

Simple to install, the LM10 features an integral set-up LED on the readhead, wide installation tolerances and an applicator tool for the adhesive-backed magnetic scale. A bidirectional reference is provided that can be actuated either by a preset mark integrated within the scale or by adding a reference sticker on top of the scale with the help of a self-aligning installation tool.

The encoders come in digital or analogue output variants and offer a range of customer selectable resolutions including 1 μm , 2 μm ,

5 μm , 10 μm , 20 μm and 50 μm . The LM10 is capable of velocities up to 25 m/s; even at 1 μm resolution it is capable of 4 m/s.

Engineered for extreme service, the solid-state LM10 linear encoders operate from -10 °C to +80 °C, have water-proof sealing to IP68 and are highly resistant to shock, vibrations and pressure. The robust magnetic scale is also resistant to a range of chemicals commonly found in industry.

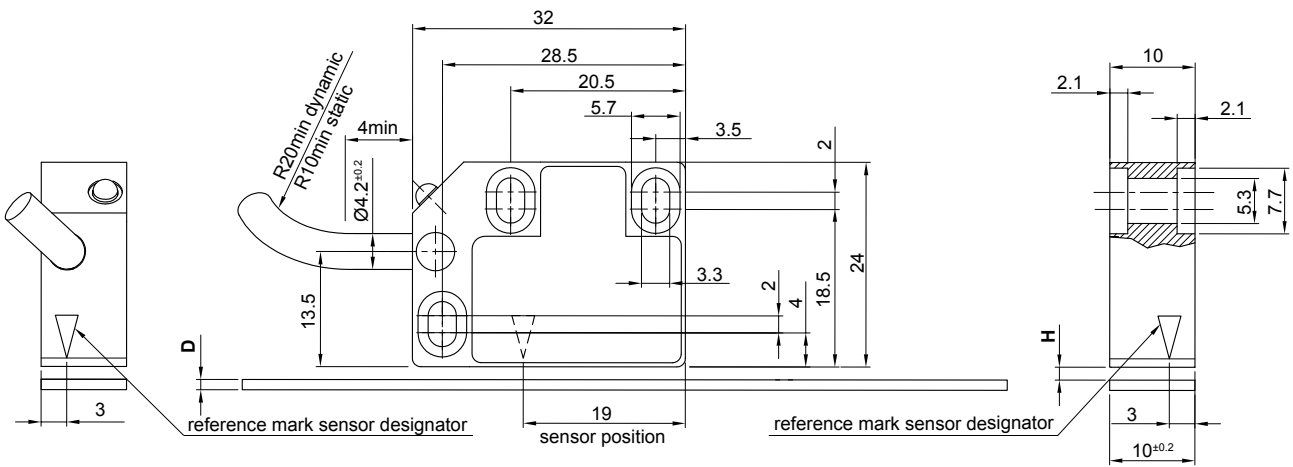
The non-contact, frictionless design eliminates wear while reducing hysteresis.

The LM10 encoders bring reliable solutions to tough, hard-working applications including woodworking, stone-cutting, sawing, metalworking, textiles, printing, packaging, plastics processing, automation and assembly systems, laser/flame/water-jet cutting, electronic assembly equipment etc.

- Customer selectable resolutions from 50 μm to 1 μm
- Stick-on reference mark
- Distance coded reference mark option
- High speed operation
- Excellent dirt immunity
- Integral set-up LED
- Axis lengths of up to 100 m
- High reliability from proven non-contact sensing technology
- Industry standard digital and analogue output options

LM10 dimensions

Dimensions and tolerances in mm.

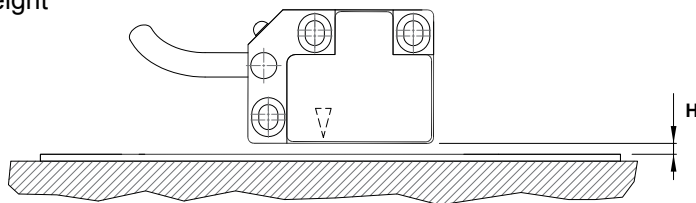


	Magnetic scale thickness (D)	Ride height (H)	
		Maximum range	Recommended range *
No cover foil, cut or magnetised reference mark	1.5 ^{-0.2}	0.1 - 1.5	0.1 - 1.0
No cover foil, stick-on reference mark	1.5 ^{-0.2}	0.5 - 1.5	0.5 - 1.0
With cover foil, cut or magnetised reference mark	1.65 ^{-0.2}	0.1 - 1.3	0.1 - 0.9
With cover foil, stick-on reference mark	1.65 ^{-0.2}	0.5 - 1.3	0.5 - 0.9

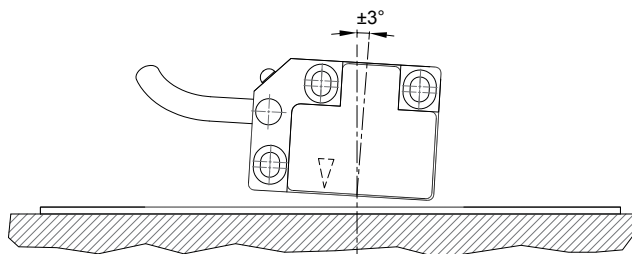
* For larger ride height (H) please see LM15 linear encoder system (LM15D01).

LM10 installation tolerances

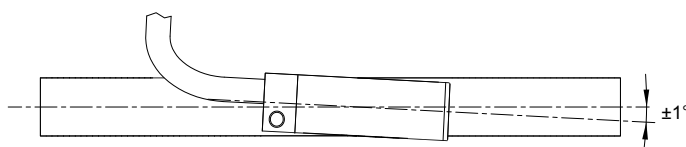
Ride height



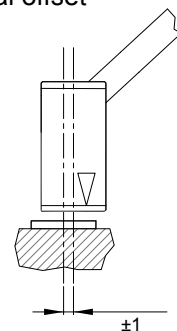
Pitch



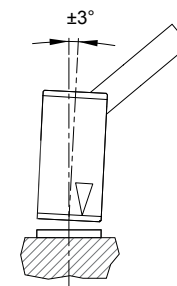
Yaw



Lateral offset



Roll



LM10 technical specifications

System data																																																							
Maximum length for MS scale	50 m (100 m special order)																																																						
Pole length	2 mm																																																						
Available resolutions	1 µm, 2 µm, 5 µm, 10 µm, 20 µm and 50 µm																																																						
Sinusoidal period length	2 mm																																																						
Maximum speed	For analogue voltage output: 25 m/s For digital output signals:																																																						
	<table border="1"> <thead> <tr> <th>Resolution (µm)</th> <th colspan="5">Maximum speed (m/s)</th> </tr> </thead> <tbody> <tr> <td>1</td> <td>4.16</td> <td>1.04</td> <td>0.52</td> <td>0.26</td> <td>0.13</td> </tr> <tr> <td>2</td> <td>8.32</td> <td>2.08</td> <td>1.04</td> <td>0.52</td> <td>0.25</td> </tr> <tr> <td>5</td> <td>20.80</td> <td>5.20</td> <td>2.59</td> <td>1.30</td> <td>0.63</td> </tr> <tr> <td>10</td> <td>25.00</td> <td>10.40</td> <td>5.20</td> <td>2.59</td> <td>1.27</td> </tr> <tr> <td>20</td> <td>25.00</td> <td>10.40</td> <td>5.20</td> <td>2.59</td> <td>1.27</td> </tr> <tr> <td>50</td> <td>25.00</td> <td>6.50</td> <td>3.25</td> <td>1.62</td> <td>0.79</td> </tr> <tr> <td>Edge separation (µs)</td> <td>0.12</td> <td>0.50</td> <td>1</td> <td>2</td> <td>4</td> </tr> <tr> <td>Count frequency (kHz)</td> <td>8333</td> <td>2000</td> <td>1000</td> <td>500</td> <td>250</td> </tr> </tbody> </table>	Resolution (µm)	Maximum speed (m/s)					1	4.16	1.04	0.52	0.26	0.13	2	8.32	2.08	1.04	0.52	0.25	5	20.80	5.20	2.59	1.30	0.63	10	25.00	10.40	5.20	2.59	1.27	20	25.00	10.40	5.20	2.59	1.27	50	25.00	6.50	3.25	1.62	0.79	Edge separation (µs)	0.12	0.50	1	2	4	Count frequency (kHz)	8333	2000	1000	500	250
Resolution (µm)	Maximum speed (m/s)																																																						
1	4.16	1.04	0.52	0.26	0.13																																																		
2	8.32	2.08	1.04	0.52	0.25																																																		
5	20.80	5.20	2.59	1.30	0.63																																																		
10	25.00	10.40	5.20	2.59	1.27																																																		
20	25.00	10.40	5.20	2.59	1.27																																																		
50	25.00	6.50	3.25	1.62	0.79																																																		
Edge separation (µs)	0.12	0.50	1	2	4																																																		
Count frequency (kHz)	8333	2000	1000	500	250																																																		
Precision class for MS scales	±20 µm/m and ±40 µm/m																																																						
Linear expansion coefficient for MS scale	~ 17 × 10 ⁻⁶ /K																																																						
Repeatability	Better than unit of resolution for movement in the same direction																																																						
Hysteresis	< 3 µm up to 0.5 mm ride height																																																						
Sub divisional error	±3.5 µm for < 0.7 mm ride height ±7.5 µm for 1 mm ride height																																																						
Mass	Readhead (1 m cable, no connector) 57 g, Cable (1 m) 34 g Magnetic scale (1 m) 60 g, Cover foil (1 m) 3.5 g																																																						
Cable data																																																							
Voltage drop over cable	~ 13 mV/m – without load ~ 54 mV/m – with 120 Ω load																																																						
Cable	Ø4.2 ^{+0.2} mm, PUR high flexible cable, drag-chain compatible, double-shielded 8 × 0.05 mm ² ; durability: 20 million cycles at 20 mm bend radius																																																						
Environmental conditions																																																							
Temperature	Operating -10 °C to +80 °C (cable under non-dynamic conditions: -20 °C to +85 °C) Storage -40 °C to +85 °C																																																						
Environmental sealing	IP68 (according to IEC 60529)																																																						
EMC Immunity	IEC 61000-6-2 (particularly: ESD: IEC 61000-4-2; EM fields: IEC 61000-4-3; Burst: IEC 61000-4-4; Surge: IEC 61000-4-5; Conducted disturbances: IEC 61000-4-6; Power frequency magnet fields: IEC 61000-4-8; Pulse magnetic fields: IEC 61000-4-9)																																																						
EMC Interference	IEC 61000-6-4 (for industrial, scientific and medical equipment: IEC 55011)																																																						
Vibrations (55 Hz to 2000 Hz)	300 m/s ² (IEC 60068-2-6)																																																						
Shocks (11 ms)	300 m/s ² (IEC 60068-2-27)																																																						

LM10IB – Digital output signals, Open Collector NPN

Square wave output

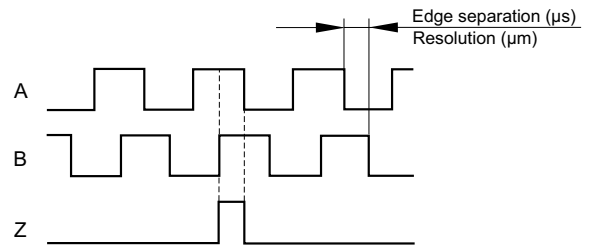
Power supply	5 V to 30 V
Power consumption	< 35 mA
Output signals	A, B, Z
Reference signal	1 or more square-wave pulses Z
Maximum load	10 mA
Cable length	See table below

Power supply voltage	Maximum cable length ** (m)			
	5 V	12 V	24 V	30 V
Edge separation (µs)				
0.12	3	2.5	1	1
0.5	10	7	4	3
1	10	10	9	6
2	10	10	10	10
4	10	10	10	10
R_L (Ω) *	500	1200	2400	3000

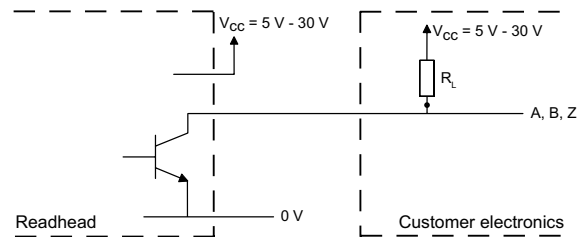
* Recommended values. For higher values of R_L shorter cables should be used.

** Encoder cable length and all other cable extensions should be taken into account.

Timing diagram



Recommended signal termination



V _{CC}	R _{L, min}
5	500
12	1,200
24	2,400
30	3,000

Set-up LED in the case of poor signal strength is flashing red.

LM10IC – Digital output signals, RS422

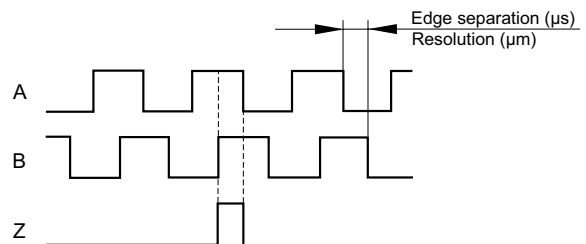
Square wave differential line driver to EIA RS422

Power supply *	4.7 V to 7 V – voltage on readhead Reverse polarity protection
Power consumption	< 35 mA
Power supply rise time	< 1 ms (for PRG option only)
Output signals	3 square-wave signals A, B, Z and their inverted signals A-, B-, Z-
Reference signal	1 or more square-wave pulse Z and its inverted pulse Z-
Signal level	Differential line driver to EIA standard RS422: U _H ≥ 2.5 V at -I _H = 20 mA U _L ≤ 0.5 V at I _L = 20 mA
Permissible load	Z ₀ ≥ 100 Ω between associated outputs I _L ≤ 20 mA max. load per output Capacitive load ≤ 1000 pF Outputs are protected against short circuit to 0 V and to +5 V
Alarm	High impedance on output lines A, B, A-, B-
Switching time (10 to 90 %)	t ₊ , t ₋ < 30 ns (with 1 m cable and recommended input circuit)
Cable length *	max. 100 m

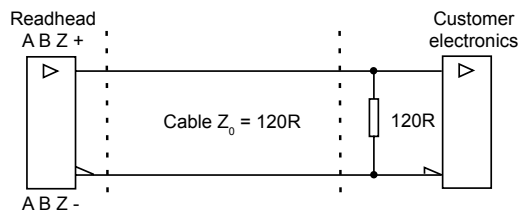
* Please consider voltage drop over cable.

Timing diagram

Complementary signals not shown



Recommended signal termination



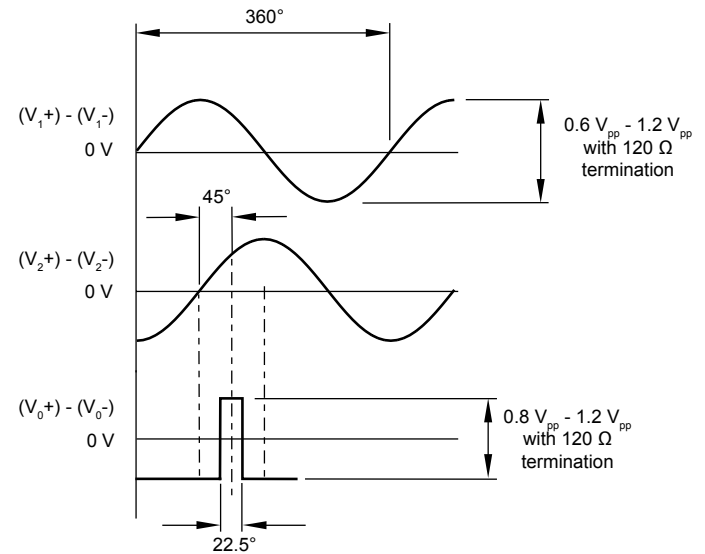
LM10AV – Analogue output signals (1 V_{pp})

2 channels V₁ and V₂ differential sinusoidals (90° phase shifted)

Power supply *	4.7 V to 7 V – voltage on readhead Reverse polarity protection	
Power consumption	< 50 mA	
Output signals	V ₁ , V ₂ , V ₀	
Sine / cosine signals	Amplitude	0.6 V _{pp} to 1.2 V _{pp} (with 120 Ω termination)
	Phase shift	90° ± 0.5°
Reference signal	Amplitude	0.8 V _{pp} to 1.2 V _{pp} (with 120 Ω termination)
	Position	45°
	Width	22.5°
Termination	Z ₀ = 120 Ω between associated outputs	
Cable length *	max. 50 m	

* Please consider voltage drop over cable.

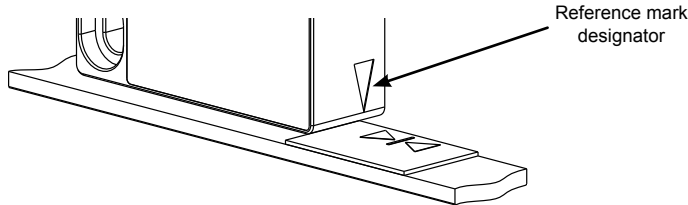
Timing diagram



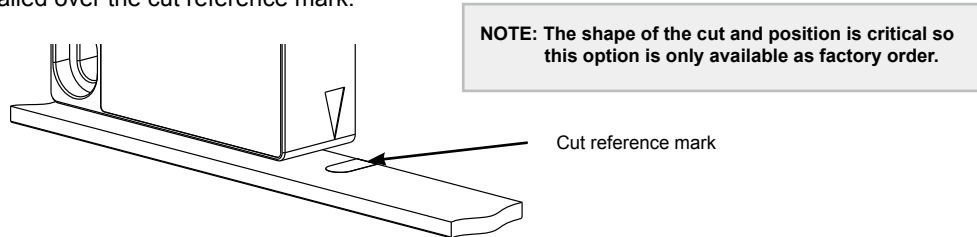
Reference mark

The repeatable bi-directional reference signal can be provided in 4 ways.

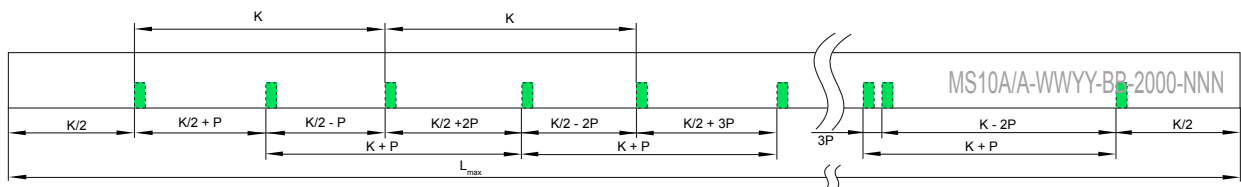
- 1) **Stick-on reference mark.** The LM10 readhead should be ordered with the reference mark option. After installation of the scale a reference mark sticker can be applied to the scale at the required position using the reference mark applicator tool. Ensure that the reference sticker is oriented to the corresponding side of the readhead that has the reference mark designator marked.



- 2) **Selected at point of order.** The LM10 readhead should be ordered with the reference mark option. If required, the cover foil can be installed over the cut reference mark.

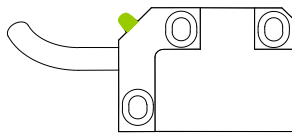


- 3) **Every 2 mm.** The LM10 readhead should be ordered with this specific mode activated only.
- 4) **Distance coded reference mark.** The distance coded reference mark option provides multiple reference marks that are individually spaced according to specific mathematical algorithm. Absolute position is calculated after traversing 2 successive reference marks. Maximum length and minimal traverse depend on basic spacing (K) between reference marks, which is customer selectable at point of order. For further information please refer to Distance coded reference mark data sheet (LM10D17).

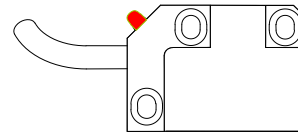


Set-up LED

After the installation of the magnetic scale (see LM10 Installation guide) the readhead can be easily adjusted on the machine using the set-up LED indicator.



Green LED = good signal strength / set-up



Red LED = poor signal strength – adjustment required
A, B, A-, B- outputs become high impedance

NOTE: IB output type: LED flashes red.

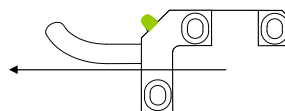
Programming (for IC output only)

Readheads can be ordered preset to the required resolution or provided so that they can be programmed as needed on the machine to the chosen resolution. This programming is carried out by connecting the readhead to a computer via a programming interface. The readhead must be ordered with the PRG option to use this function.

Positive direction

Digital output signals – A leads B

Analogue output signals ($1 V_{pp}$) – V_1 leads V_2



LM10 readhead part numbering



LM10 IC 010 C A 10 F 00

Output type

IB - Incremental, Open Collector NPN; 5 V - 30 V
IC - Incremental, RS422; 5 V
AV - Analogue voltage, 1 V_{pp}; 5 V

Resolution

000 - for **AV** output type

For **IB** and **IC** output types

001 - 1 μm
002 - 2 μm
005 - 5 μm
010 - 10 μm
020 - 20 μm
050 - 50 μm

PRG - Programmable from 1 μm to 50 μm - preset to 1 μm (for **IC** output type)

Minimum edge separation

For **AV** output type

A - N/A

For **IB** and **IC** output types

A - 0.12 μs (8.3 MHz)*
B - 0.5 μs (2 MHz)
C - 1 μs (1 MHz)
D - 2 μs (0.5 MHz)
E - 4 μs (0.25 MHz)

Special requirements

00 - No special requirements (standard)

Connector option

A - 9 pin D type plug
D - 15 pin D type plug (for **IC** output type)
L - 15 pin D type plug (for **AV** output type)
H - 15 pin HD type plug (for **IC** output type)
P - 9 pin D type plug (for **AV** output type)
F - Flying lead (no connector)

Cable length

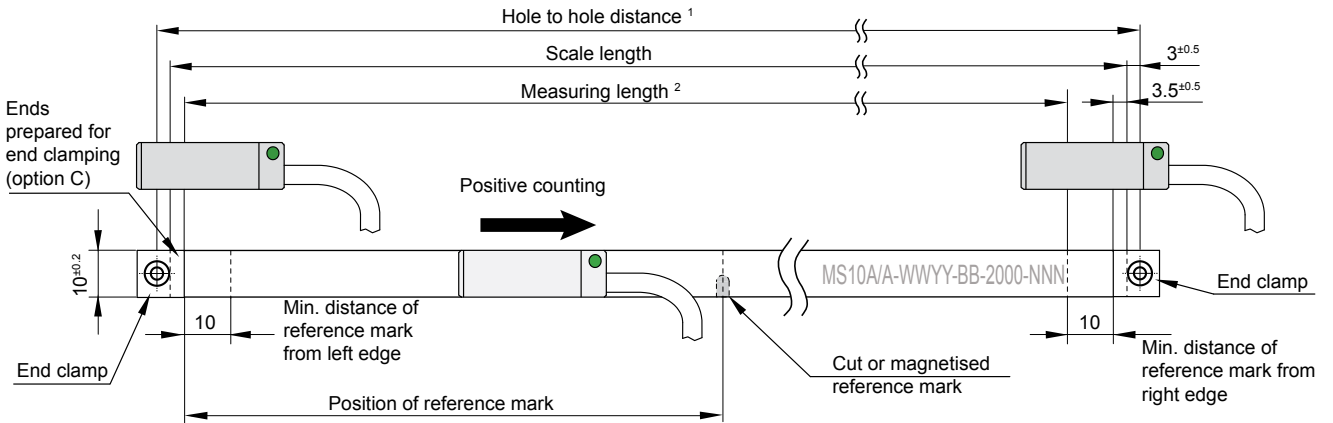
10 - 1.0 m (standard)

Reference

A - With reference
B - No reference
C - Periodic as per scale pitch (2 mm)

* Default for **PRG** option.

Magnetic scale part numbering



¹ Hole to hole distance = scale length + 6^{±1} mm (for end clamp mounting)

² Measuring length = scale length - 17 mm

MS10 B 1000 B 0032

<p>Precision class A - ±20 µm/m B - ±40 µm/m</p> <p>Scale length xxxx - Where xxxx equals scale length in cm</p>	<p>Reference mark 0000 - No reference mark xxxx - Where xxxx equals position of machined reference mark in cm (reference mark position will be within ±1 cm from requested position) Dxxx - Distance coded reference mark; where xxx equals basic increment in mm</p> <p>Options A - No cover foil B - Cover foil supplied (separately - 5 cm longer than tape) C - No cover foil, ends prepared for end clamping G - Track system *</p>
--	--

* For details on TRS track system please refer to data sheet LM10D18

Accessories part numbering

Cover foil **CF10 1000**

Foil length
xxxx - Where xxxx equals foil length in cm

Stick-on reference mark	LM10SRM00
Applicator tool for stick-on reference mark	LM10ARM00
Applicator tool for magnetic scale and cover foil	LM10ASC00
End clamp kit (2 clamps + 2 screws)	LM10ECL00

Document issues

Issue	Date	Page	Corrections made
01	8. 11. 2007	-	New document
02	29.11.2007	-	Minor text errors corrected, Corrected Maximum speed table data on page 3
	30.11.2007	2	Changed Pitch and Yaw description and image layout
	15. 1. 2008	3, 4, 5	Minor text errors corrected
03	28. 2. 2008	1, 3, 7	Removed the 100 μm option
		2	Added the Reference mark detection side symbol
		5	New reference mark images
		8	Added the magnetic scale dimensions image
04	6. 6. 2008	2, 5	New installation drawing
		-	Reference mark installation moved to LM10 Installation guide
		4, 6	Analogue output signal specifications added
		6	IB output type removed, AC output type and connector option L added
05	25. 11. 2008	4, 7, 8	IB output type, new magnetic scale diagram and end clamping option added
06	5. 12. 2008	3	Hysteresis data added
07	14. 1. 2009	-	New layout
08	29. 7. 2009	5	Amended reference signal width for 1 V_{pp} output variant
09	4. 8. 2009	5	Amended reference signal width for 12 μA output variant
10	30. 4. 2010	2	Ride height table added, lateral offset and yaw updated
		6	Distance coded reference mark option added
		8	End clamp option added to technical drawing; distance coded reference mark and track section option added; reference mark magnetiser added to accessories
11	5. 5. 2011	3	Power supply voltage rise time added, Cable dimensions and weight added
		4	IB output type: maximum cable length table added
		3, 5, 7	AC output type removed
		3, 7	Special requirement option 01 removed

RLS merilna tehnika d.o.o.
Poslovna cona Žeje pri Komendi
Pod vrbami 2
SI-1218 Komenda
Slovenia

T +386 1 5272100
F +386 1 5272129
E mail@rls.si
www.rls.si

RENISHAW is our worldwide sales support partner for Magnetic Encoders.

Australia
T +61 3 9521 0922
E australia@renishaw.com

Austria
T +43 2236 379790
E austria@renishaw.com

Brazil
T +55 11 4195 2866
E brazil@renishaw.com

Canada
T +1 905 828 0104
E canada@renishaw.com

The People's Republic of China
T +86 10 8448 5306
E beijing@renishaw.com

Czech Republic
T +420 5 4821 6553
E czech@renishaw.com

France
T +33 1 64 61 84 84
E france@renishaw.com

Germany
T +49 7127 9810
E germany@renishaw.com

Hong Kong
T +852 2753 0638
E hongkong@renishaw.com

Hungary
T +36 23 502 183
E hungary@renishaw.com

India
T +91 20 6674 6751
E india@renishaw.com

Israel
T +972 4 953 6595
E israel@renishaw.com

Italy
T +39 011 966 10 52
E italy@renishaw.com

Japan
T +81 3 5366 5316
E japan@renishaw.com

The Netherlands
T +31 76 543 11 00
E benelux@renishaw.com

Poland
T +48 22 577 11 80
E poland@renishaw.com

Russia
T +7 495 231 1677
E russia@renishaw.com

Singapore
T +65 6897 5466
E singapore@renishaw.com

Slovenia
T +386 1 52 72 100
E mail@rls.si

South Korea
T +82 2 2108 2830
E southkorea@renishaw.com

Spain
T +34 93 663 34 20
E spain@renishaw.com

Sweden
T +46 8 584 90 880
E sweden@renishaw.com

Switzerland
T +41 55 415 50 60
E switzerland@renishaw.com

Taiwan
T +886 4 2473 3177
E taiwan@renishaw.com

UK
T +44 1453 524524
E uk@renishaw.com

USA
T +1 847 286 9953
E usa@renishaw.com

**For all other countries
Please contact RLS' head
office**

T +386 1 52 72 100
E mail@rls.si