

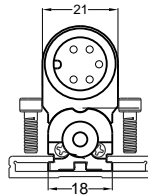
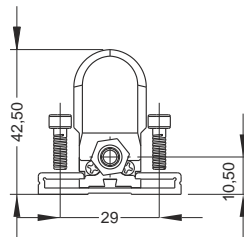
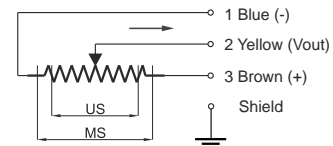
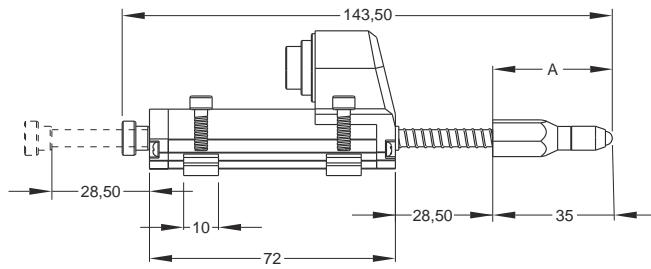
## Linear potentiometer Spring return, slim body series

Measuring range 10 - 100 mm  
Long mechanical life  
Excellent repeatability <0.01 mm  
Infinite resolution



### Technical specifications

Measurement stroke	10 ... 100 mm
Linearity	± %0,05
Repeatability	< 0.01 mm
Resolution	Infinite
Resistance	5 KOhm or 10 KOhm ( 10-25mm for 2 kOhm )
Resistance tolerance	± %20
Load resistance	100 KOhm min.
Recommended cursor current	<1 µA
Permissible applied voltage	28 VDC max.
Electrical connections	5 pin connector / cable output
Displacement speed	< 5 m/s
Mechanical life	100 million cycles
Case dimensions	Ø18 mm
Case material	Anodized aluminium
Rod material	Stainless Steel
Rod diameter	Ø5 mm
Mechanical fixing	Variable brackets
IP degree	IP 65
Operating temperature	-20°C ... +80°C
Storage temperature	-30°C ... +90°C



	A					
SLPKS 10	10	25	50	75	100	35
SLPKS 25	10	25	50	75	100	35
SLPKS 50	13	28	52	78	103	42
SLPKS 75	13	28	52	78	103	42
SLPKS 100	113,5	143,5	203,5	253,5	303,5	42

Model	Measurement stroke (mm)	Linearity (%)	Resistance (KOhm)	Connector / Cable
(example) SLPKS	100	D	5K	C5
SLPKS	10 ... 100mm	D : ± %0,05 (standart)	2K : 2 KOhm (10-25mm) 5K : 5 KOhm 10K : 10 KOhm	C5 : 5 pin connector 1M: standard